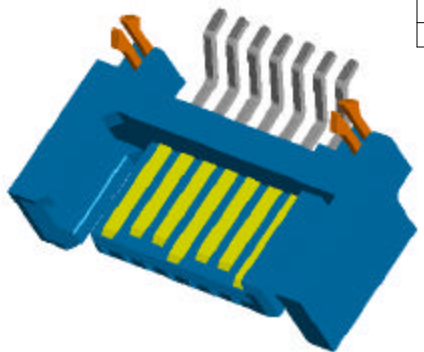
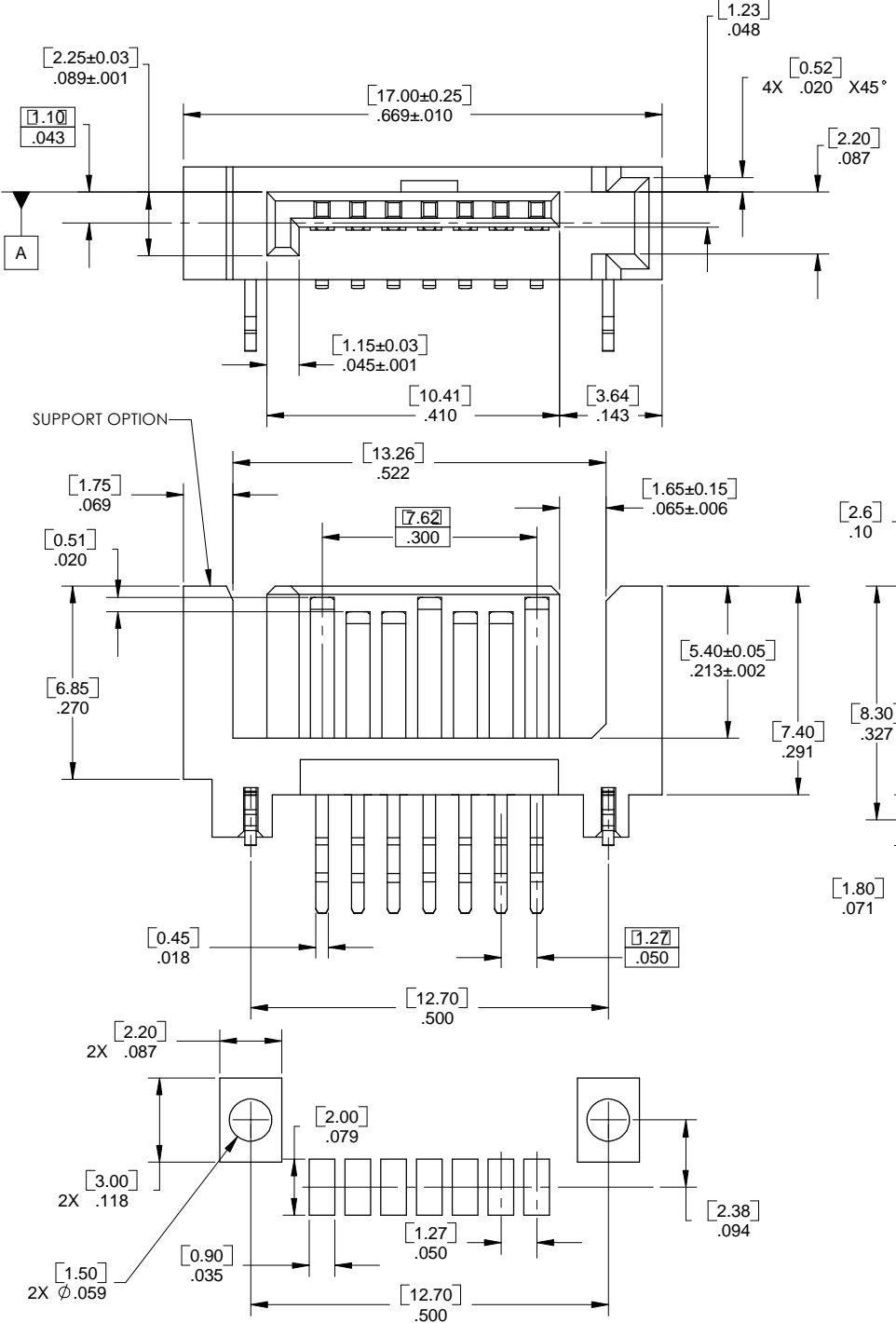


PART NO. CA-07SAHPR-X-0-1

REVISIONS				
LTR	DESCRIPTION	DATE	APPROVED	
A	INITIAL RELEASE SEE DO 5278	C.P 09-12-03	A.J.	
B	SEE DO 5350	C.P 12-12-03	A.J.	



ORDERING NOMENCLATURE :

CA - 07SAHPR-X-0-1

NUMBER OF POSITION _____

SERIAL ATA HOST PLUG RIGHT ANGLE _____

PLATING _____

A = GOLD FLASH
C = .000015 [.00038] GOLD
F = .000030 [.00076] GOLD

PROFILE _____

0 = SURFACE MOUNT

HEIGHT _____

1 = REGULAR

SPECIFICATIONS :
MATERIAL :
INSULATOR : LCP 30% GLASS FILLED, BLACK, UL94V-0
CONTACT : PHOSPHOR BRONZE CS191R-H
BURRS .003[0.08] MAX.
WRAP .006[.15] MAX.
METAL BOARD LOCK : PHOSPHOR BRONZE

NOTE: UNLESS OTHERWISE SPECIFIED

RECOMMENDED P.C.B LAYOUT

RECOMMENDED PCB THICKNESS .063 [1.6]

DIMENSIONS ARE IN INCHES TOLERANCES ARE:		APPROVALS	DATE	CIRCUIT ASSEMBLY CORP. 18 THOMAS ST., IRVINE, CALIFORNIA 92618-2777
DECIMALS	ANGLES	DRAWN	9-12-03	
.XX ±.010	±3°	CUONG.P		CONNECTOR ASSEMBLY - SAHPR CA-07SAHPR-X-0-1 SATA SERIES
.XXX ±.005		CHECKED	A. JOPCHEN 9-12-03	
DIMENSIONS IN BRACKETS [X.XX] ARE IN MILLIMETERS TOLERANCES ARE:		<small>THE INFORMATION AND DESIGN DISCLOSED HEREIN WAS ORIGINATED BY AND IS THE PROPERTY OF CIRCUIT ASSEMBLY CORPORATION. CIRCUIT ASSEMBLY CORPORATION RESERVES ALL PATENT, PROPRIETARY, DESIGN, MANUFACTURING, REPRODUCTION, USE AND SALES RIGHTS THERE TO, AND TO ANY ARTICLE DISCLOSED HEREIN EXCEPT TO THE EXTENT RIGHTS ARE EXPRESSLY GRANTED TO OTHERS. THE FOREGOING DOES NOT APPLY TO VENDOR PROPRIETARY RIGHTS.</small>		SIZE C
DECIMALS	ANGLES	CODE IDENT NO.	DRAWING NO.	REV.
.X ±.25	±3°	52072	610303	B
.XX ±.13		SCALE: 8 : 1	SHEET 1 OF 1	

DO NOT SCALE DRAWING