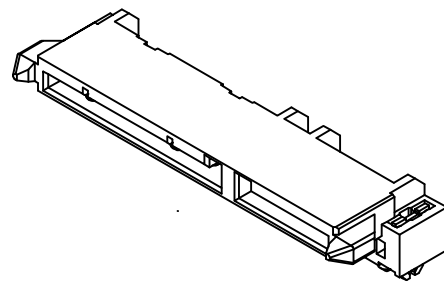
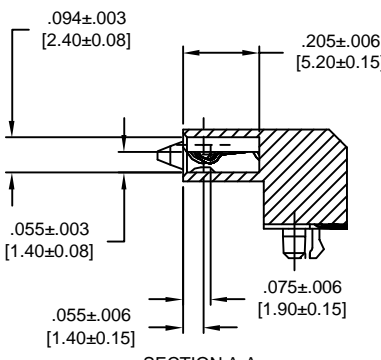
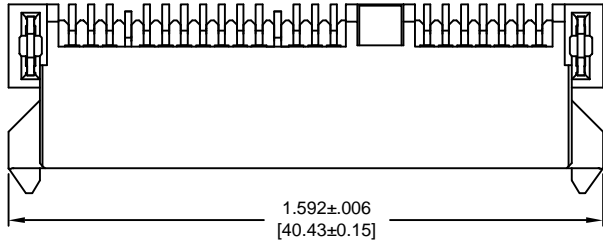


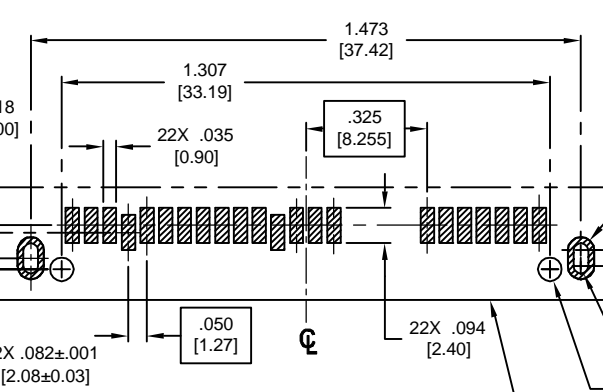
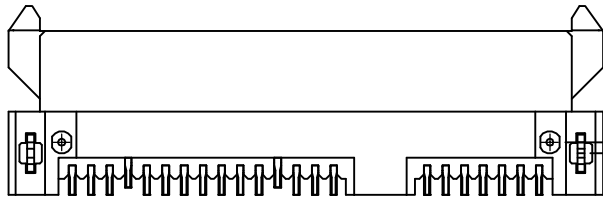
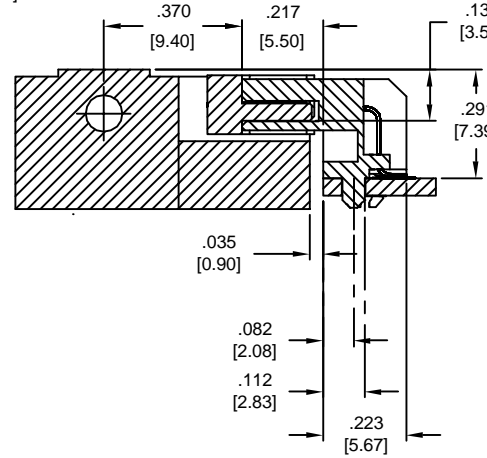
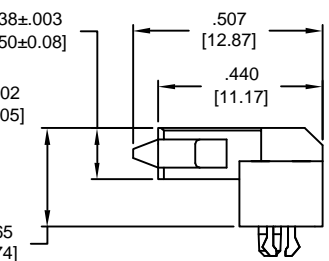
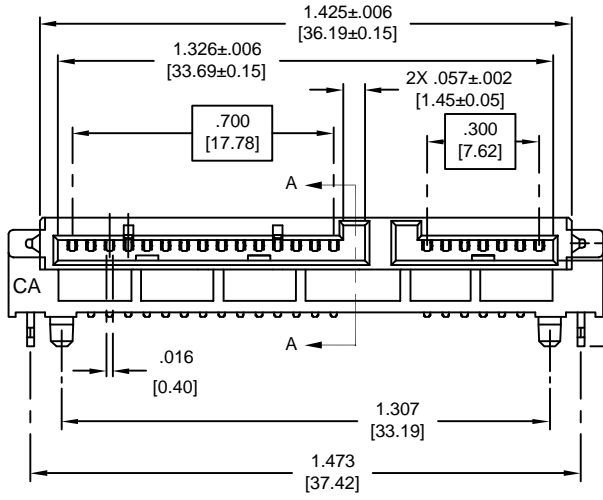
PART NO. CA-22SAHSR-X-X-X

REVISIONS				
LTR	DESCRIPTION	DATE	APPROVED	
A	INITIAL RELEASE SEE DO 5345	C.P.	12-09-03	A.J.
B	SEE DO 5361	C.P.	12-31-03	A.J.



CA - 22SAHSR - X - X - X

NO. OF POSITIONS _____
 SERIAL ATA HOST PLUG RIGHT ANGLE _____
 PLATING _____
 A = CONTACT AREA : GOLD FLASH
 B = CONTACT AREA : .000003 [.00008]GOLD
 D = CONTACT AREA : .000005 [.00013] GOLD
 C = CONTACT AREA : .000015 [.00038] GOLD
 F = CONTACT AREA : .000030 [.00076] GOLD
 ALL WITH :
 SOLDER TAIL AREA : .000075 [.00191] MIN.TIN/LEAD ALLOY
 UNDER PLATE : .000050 [.00127] NICKEL MIN.
 LOGO _____
 1 = NO LOGO
 2 = WITH 'CA' LOGO
 CONFIGURATION _____
 1 = NO LOCK TAB
 2 = THREE LOCK TAB



RECOMMENDED PC LAYOUT COMPONENT SIDE SHOWN

PCB EDGE

SPECIFICATION :
 MATERIALS :
 INSULATOR : LIQUID CRYSTAL POLYAMIDE (LCP), 30 % GLASS FILLED, UL94V-0, COLOR BLACK
 CONTACT : PHOSPHOR BRONZE, THICKNESS : .009[.25]
 BOARDLOCK : PHOSPHOR BRONZE, THICKNESS : .017[.45]
 RECOMMENDE PCB THICKNESS : .031 - .057 [79 - 1.45]

NOTES : UNLESS OTHERWISE SPECIFIED

DIMENSIONS ARE IN INCHES TOLERANCES ARE : DECIMALS ANGLES XX ±.010 ±3° XXX ±.005	APPROVALS	DATE	CIRCUIT ASSEMBLY CORP. 18 THOMAS ST., IRVINE, CALIFORNIA 92618-2777
	DRAWN CUONG P.	12-09-03	
DIMENSIONS IN BRACKETS [X.XX] ARE MILLIMETERS TOLERANCES ARE : DECIMALS ANGLES XX ±.25 ±3° XXX ±.13	CHECKED ART JOCHEN	12-09-03	CONNECTOR ASSEMBLY - SATA HOST SOCKET CA-22SAHSR SERIES, R/A, SMT
	THE INFORMATION AND DESIGN DISCLOSED HEREIN WAS ORIGINATED BY AND IS THE PROPERTY OF CIRCUIT ASSEMBLY CORPORATION. CIRCUIT ASSEMBLY CORPORATION RESERVES ALL PATENT, PROPRIETARY, DESIGN, MANUFACTURING, REPRODUCTION, USE AND SALES RIGHTS THEREOF, AND TO ANY ARTICLE DISCLOSED HEREIN EXCEPT TO THE EXTENT RIGHTS ARE EXPRESSLY GRANTED TO OTHERS. THE FOREGOING DOES NOT APPLY TO VENDOR PROPRIETARY RIGHTS.		
DO NOT SCALE DRAWING	SCALE: 4:1	SHEET 1 OF 1	SIZE C CODE IDENT NO. 52072 DRAWING NO. 610308 REV. B