

PART NO. CA-22SAPP-X-X

REVISIONS				
LTR	DESCRIPTION	DATE	APPROVED	
A	INITIAL RELEASE SEE DO 5302	C.P. 10-15-03	A.J.	
B	SEE DO 5304	C.P. 10-16-03	A.J.	
C	SEE DO 5374	C.P. 01-22-04	A.J.	



ORDERING NOMENCLATURE :

CA-22SAPP-X-X

NUMBER OF CONTACT POS

SERIAL ATA PERIPHERAL PLUG

PLATING

A = CONTACT AREA : GOLD FLASH

C = CONTACT AREA : .000015 [.00038] GOLD

D = CONTACT AREA : .000005 [.00013] GOLD

F = CONTACT AREA : .000030 [.00076] GOLD

ALL WITH :
 SOLDER TAIL AREA : .000150 [.00381] 90/10 TIN/LEAD ALLOY
 UNDERPLATE : .000075 [.00191] NICKEL

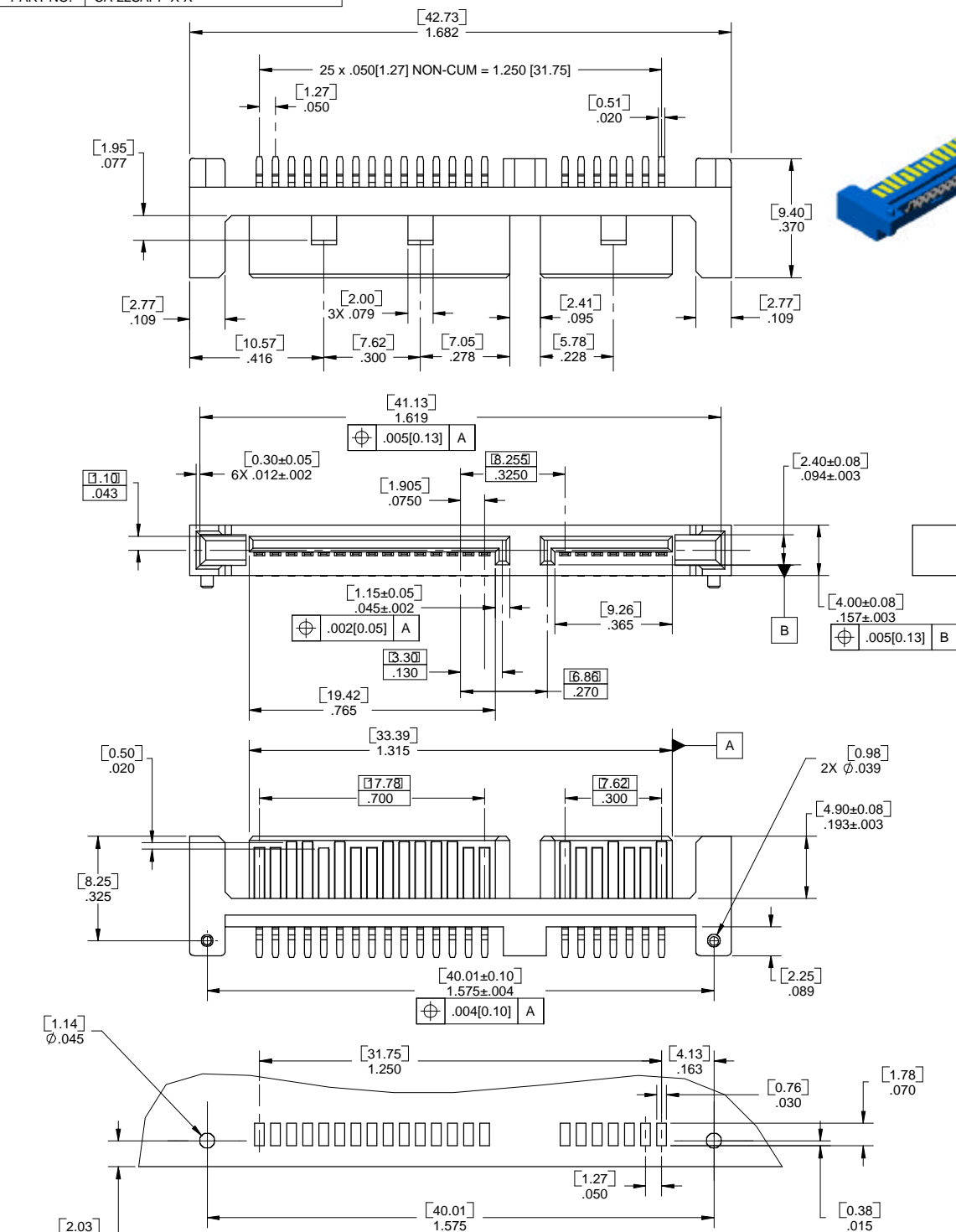
MOUNTING STYLE

- 0 = SURFACE MOUNT
- 1 = THRU HOLE

1. INTERPRET DIMENSIONS AND TOLERANCES ASME Y14.5-1994

NOTES : UNLESS OTHERWISE SPECIFIED

DIMENSIONS ARE IN INCHES TOLERANCES ARE: DECIMALS ANGLES .XX ±.010 ±3° .XXX ±.005	APPROVALS DRAWN CUONG.P.	DATE 10-15-03	CIRCUIT ASSEMBLY CORP. 18 THOMAS ST., IRVINE, CALIFORNIA 92618-2777
	CHECKED A.JOCHEN	10-15-03	
DIMENSIONS IN BRACKETS [X.XX] ARE IN MILLIMETERS TOLERANCES ARE: DECIMALS ANGLES .X ±.25 ±3° .XX .13	THE INFORMATION AND DESIGN DISCLOSED HEREIN WAS ORIGINATED BY AND IS THE PROPERTY OF CIRCUIT ASSEMBLY CORPORATION. CIRCUIT ASSEMBLY CORPORATION RESERVES ALL PATENT, PROPRIETARY, DESIGN, MANUFACTURING, REPRODUCTION, USE AND SALES RIGHTS THEREBY, AND TO ANY ARTICLE DISCLOSED HEREIN EXCEPT TO THE EXTENT RIGHTS ARE EXPRESSLY GRANTED TO OTHERS. THE FOREGOING DOES NOT APPLY TO VENDOR PROPRIETARY RIGHTS.		CONNECTOR ASSEMBLY-PLUG SAPP SERIES SERIAL ATA PERIPHERAL PLUG
	DO NOT SCALE DRAWING	SIZE C CODE IDENT NO. 52072	
SCALE: 4:1		SHEET 1 OF 1	



RECOMMENDED PC BOARD LAYOUT

4

3

2

1