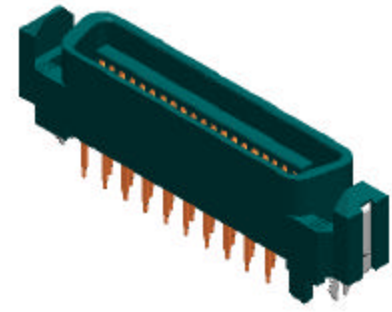
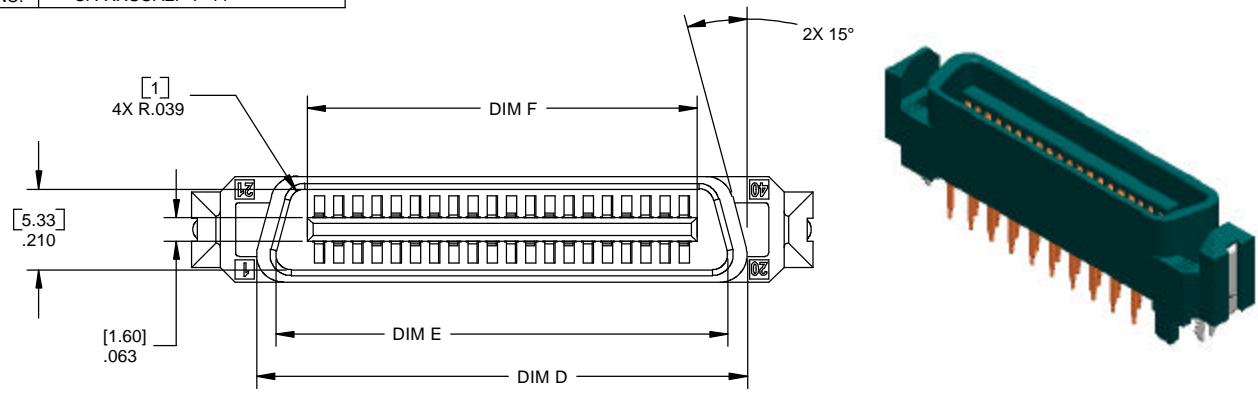


PART NO. CA-XXSCA2P-F-11

REVISIONS			
LTR	DESCRIPTION	DATE	APPROVED
A	INITIAL RELEASE SEE DO 5232	AJ 07-28-03	L.F.
B	SEE DO 5346	CP 12-09-03	A.J.



# CA-XXSCA2P-F-11

**NO. OF PIN POSITIONS:** \_\_\_\_\_  
 40  
 80

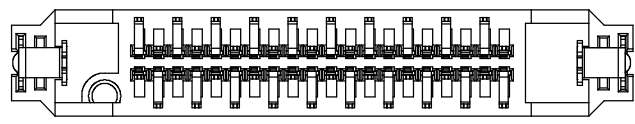
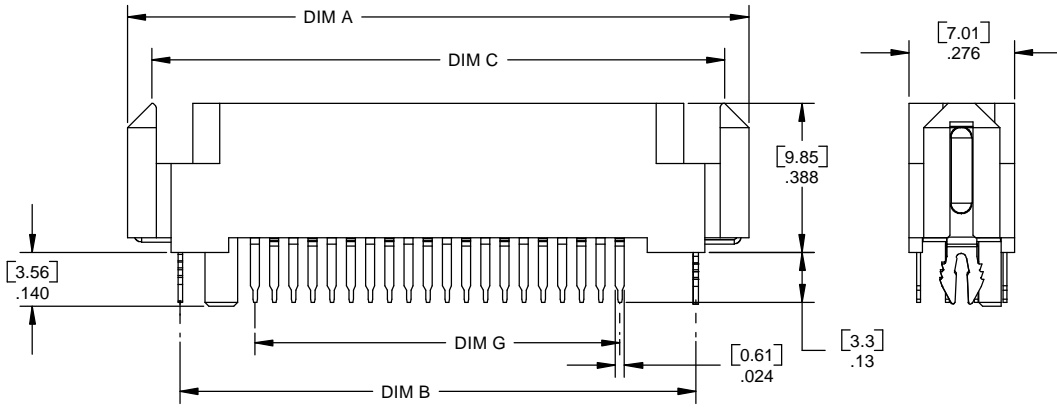
**SINGLE CONNECTOR ATTACHMENT PLUG:** \_\_\_\_\_

**PLATING:** \_\_\_\_\_

**CONTACT:**  
 F = MATING AREA : .000030 [.00076] GOLD  
 TAIL AREA : .000150 [.00381] TIN/LEAD  
 UNDERPLATE : .000050 [.00127] NICKEL

**CLIP:** .000150 [.00381] TIN/LEAD OVER  
 .000050 [.00127] NICKEL

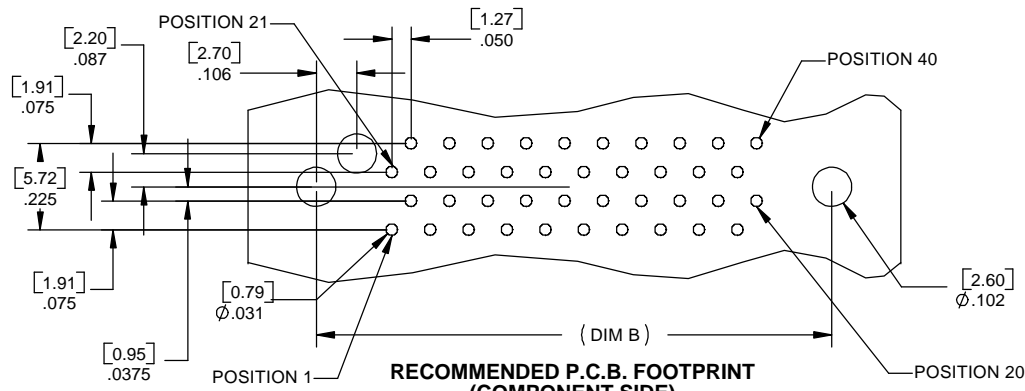
**TAIL CONFIGURATION:** \_\_\_\_\_  
 SOLDER .13 [3.3] LONG TAIL



**SPECIFICATIONS:**  
 CONFORMS TO SFF-8451 SPECIFICATIONS FOR SCA-2 UNSHIELDED CONNECTORS

- MECHANICAL**
- MATING FORCE : 90g MAX. PER CONTACT
  - UNMATING FORCE : 15g MIN. PER CONTACT
  - DURABILITY : 500 CYCLES MINIMUM
  - CONTACT MATERIAL : PHOSPHOR BRONZE
  - INSULATOR MATERIAL : HIGH TEMPERATURE THERMOPLASTIC  
 BLACK, UL94V-0
  - CLIP MATERIAL : BRASS
  - CONTACT PLATING:  
 MATING AREA : 0.00076 [30uin] GOLD  
 TAIL AREA : 0.0038 [150uin] TIN/LEAD  
 UNDERPLATE : 0.0013 [50uin] NICKEL
  - CLIP PLATING : 0.0038 [150uin] TIN/LEAD OVER  
 0.0013 [50uin] NICKEL

- ENVIRONMENTAL**
- TEMPERATURE RANGE : -55°C TO 105°C
- ELECTRICAL**
- VOLTAGE RATING : 250V AC
  - DIELECTRIC WITHSTANDING VOLTAGE : 500V DC FOR 1 MIN.
  - INSULATOR RESISTANCE : >1000 MEGOHMS @ 250 Vrms
  - CONTACT RESISTANCE : <35 MILLIOHMS
  - CURRENT RATING : 1 AMP



**RECOMMENDED P.C.B. FOOTPRINT (COMPONENT SIDE)**

**TABULATION**

NO. OF POSITIONS	A		B		C		D		E		F		G	
	in.	mm.	in.	mm.	in.	mm.	in.	mm.	in.	mm.	in.	mm.	in.	mm.
40	1.618	41.10	1.343	34.11	1.492	37.90	1.278	32.46	1.176	29.87	1.015	25.78	0.950	24.13
80	2.618	66.50	2.343	59.51	2.492	63.30	2.278	57.86	2.176	55.27	2.015	51.18	1.950	49.53

DIMENSIONS ARE IN INCHES TOLERANCES ARE:		APPROVALS	DATE
DECIMALS	ANGLES	DRAWN A.JOCHEN	7-28-03
.XX ±.01	±3°	CHECKED L.FONG	7-28-03
.XXX ±.005			

**CIRCUIT ASSEMBLY CORP.**  
 18 THOMAS ST., IRVINE, CALIFORNIA 92618-2777

**CONNECTOR ASSEMBLY - PLUG**

**SOLDER TAIL SCA2 SERIES**

SIZE	CODE IDENT NO.	DRAWING NO.	REV.
C	52072	620460	B

SCALE: 4:1 SHEET 1 OF 1